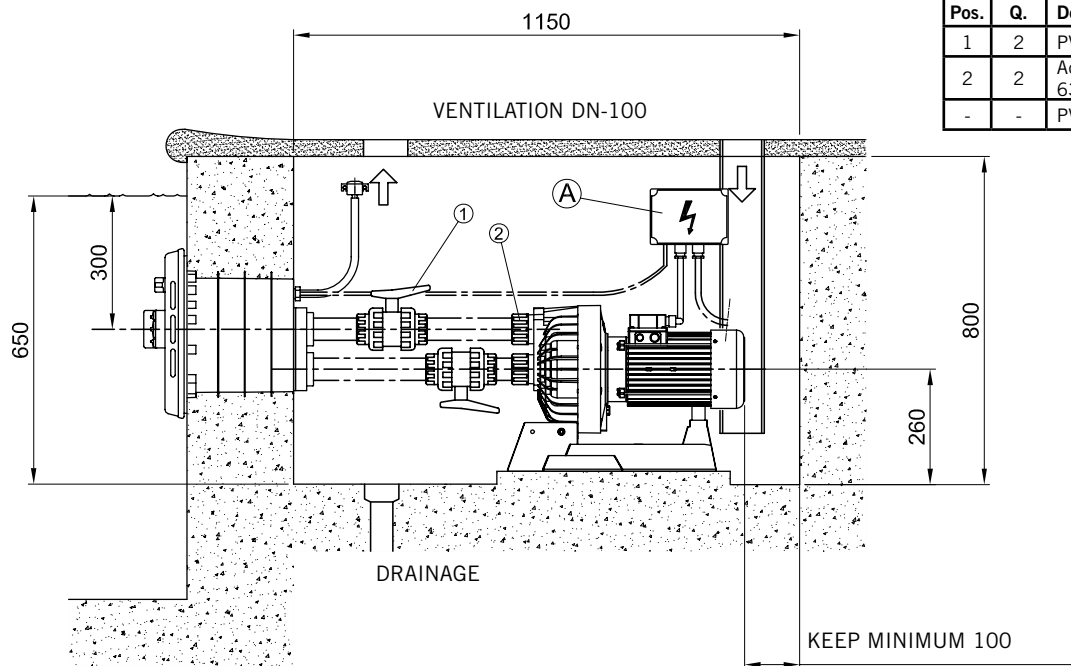


## COUNTERCURRENT SWIMMING EQUIPMENT: MARLIN

### Pump assembly with horizontal discharge

Accessories recommended for the assembly (not included in the kit)

Pos.	Q.	Denomination	Code
1	2	PVC Valve Ø63 mm	02458
2	2	Adapter nipple 63 mm x 2" male thread	02107
-	-	PVC pipe Ø 63 mm PN-6	02692



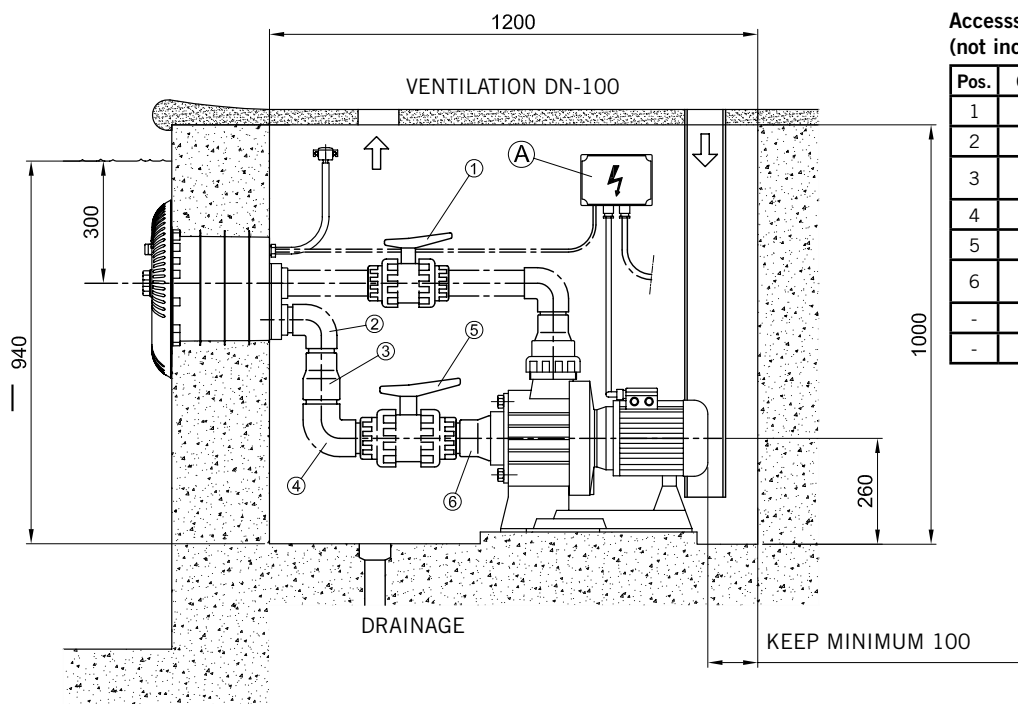
(A) ELECTRIC CONNEXION BOX: must be installed in a dry area

Dimensions in mm  
Minimum pit dimensions: 1150 x 800 x 700 mm

### Pump assembly with vertical discharge

Accessories recommended for the assembly (not included in the kit)

Pos.	Q.	Denomination	Code
1	1	PVC Valve Ø63 mm	02458
2	2	PVC elbow 90° Ø 63 mm	01717
3	2	Conical reduction Ø90-75x63 mm	01993
4	1	PVC elbow 90° Ø 75 mm	01718
5	1	PVC Valve Ø75 mm	02459
6	1	Conical reduction Ø110-90x75 mm	01997
-	-	PVC Pipe Ø63 mm PN-6	02692
-	-	PVC Pipe Ø75 mm PN-6	02693



(A) ELECTRIC CONNEXION BOX: must be installed in a dry area

Dimensions in mm  
Minimum pit dimensions: 1200 x 1000 x 700 mm